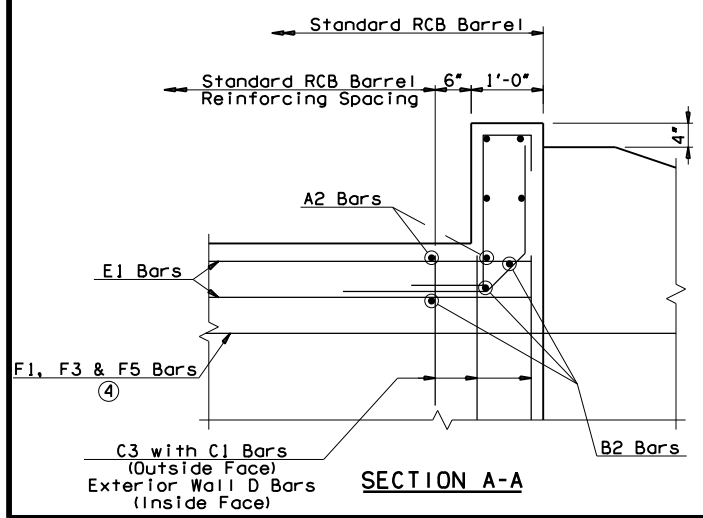
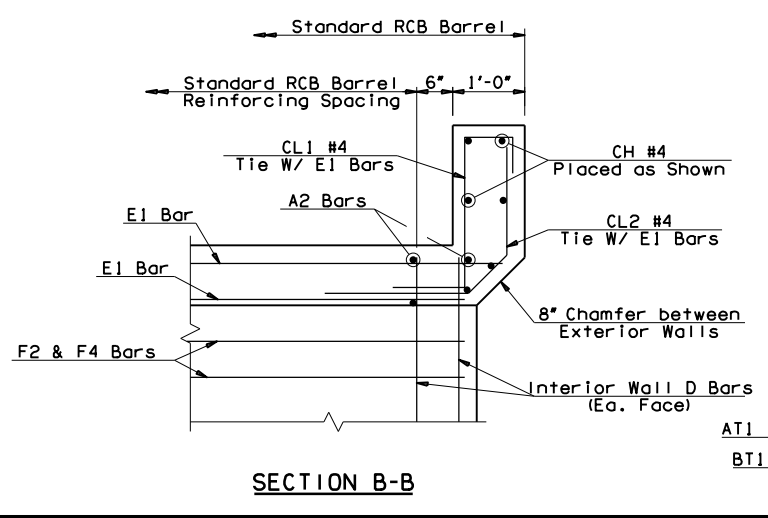


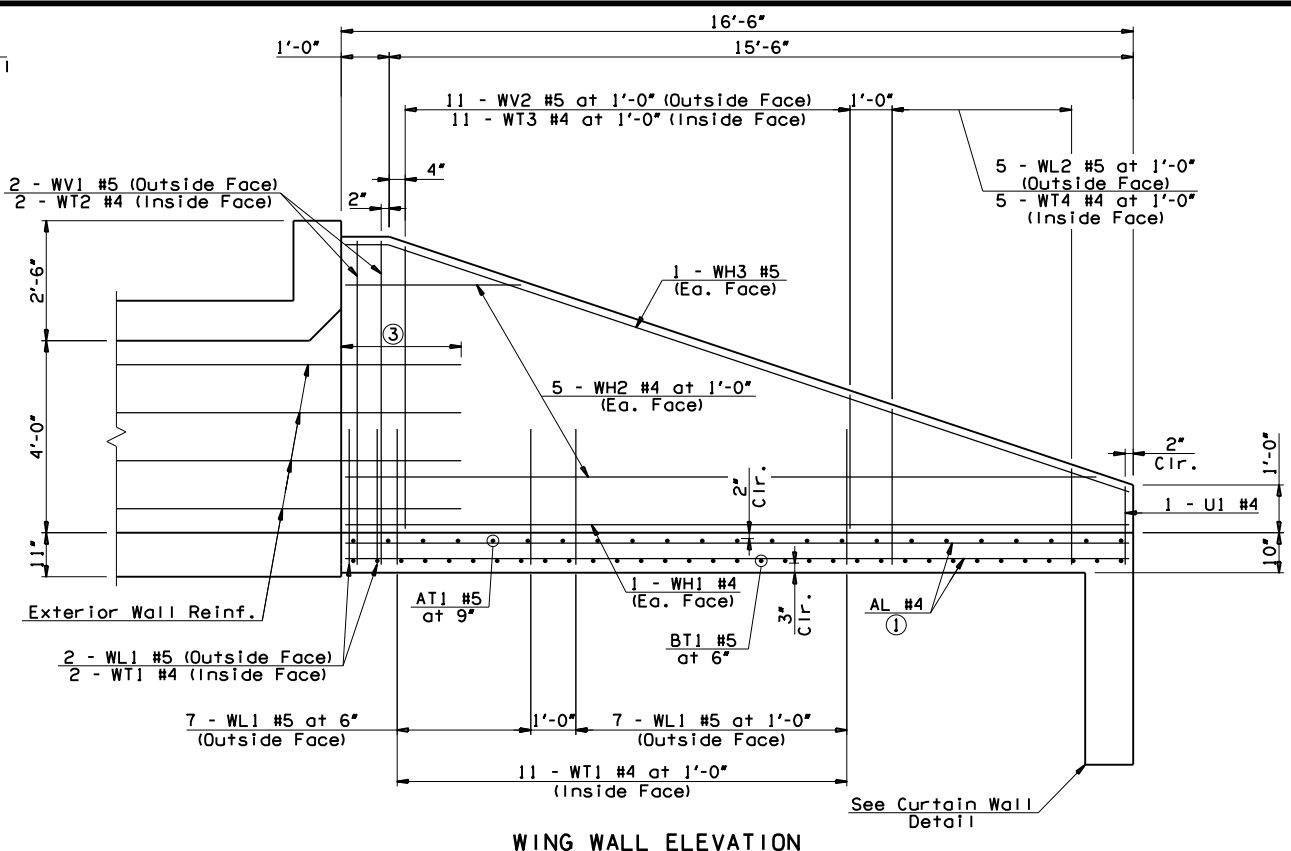
APRON PLAN



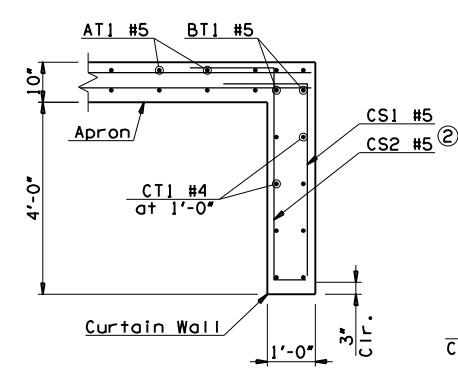
SECTION A-A



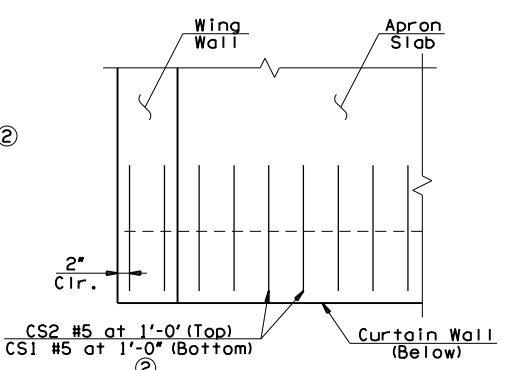
SECTION B-B



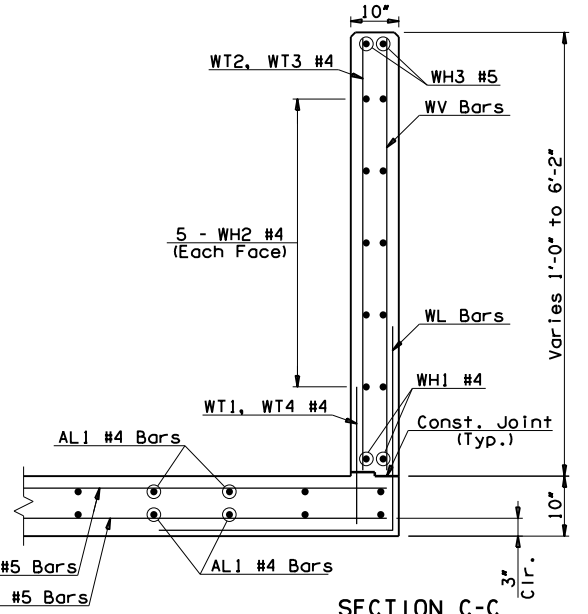
WING WALL ELEVATION



TYPICAL SECTION THRU CURTAIN WALL



CURTAIN WALL-APRON PLAN

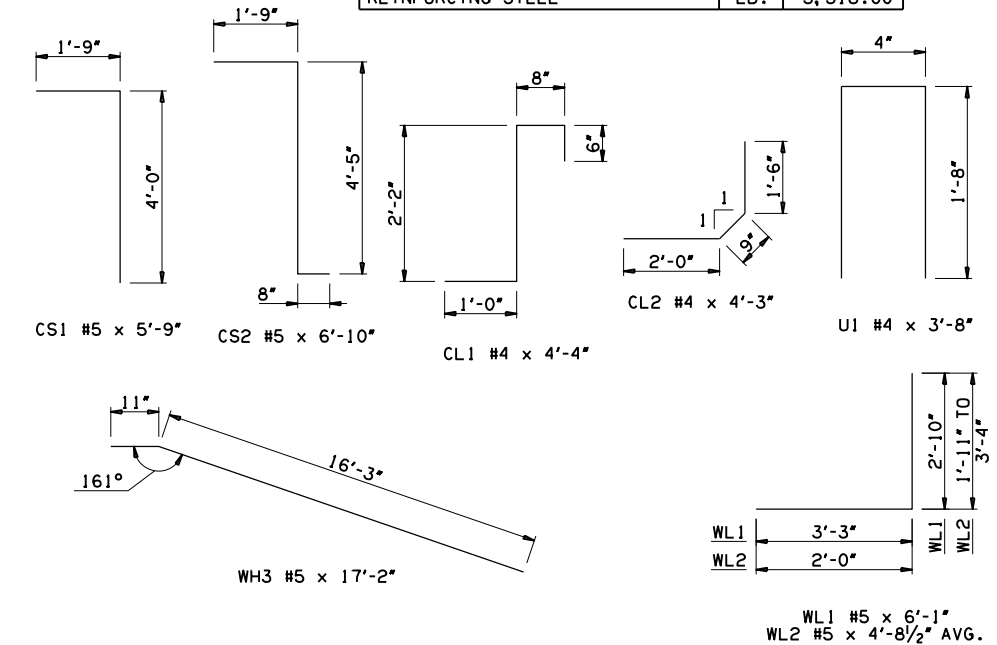


SECTION C-C

BAR LIST - EXIT STRUCTURE					
MARK	SIZE	NO.	FORM	LENGTH	LENGTH VARIATION
REINFORCING STEEL					
AL1	#4	52	STR.	16'-2"	-
AT1	#5	23	STR.	24'-4"	-
BT1	#5	33	STR.	24'-4"	-
CH1	#4	4	STR.	24'-4"	-
CL1	#4	24	BENT	4'-4"	-
CL2	#4	24	BENT	4'-3"	-
CS1	#5	26	BENT	5'-9"	-
CS2	#5	26	BENT	6'-10"	-
U1	#4	2	BENT	3'-8"	-
WH1	#4	4	STR.	16'-2"	-
WH2	#4	20	STR.	9'-8" AVG.	3'-8" TO 15'-8"
WH3	#5	4	BENT	17'-2"	-
WL1	#5	32	BENT	6'-1"	-
WL2	#5	10	BENT	4'-8 1/2" AVG.	3'-11" TO 5'-4"
WT1	#4	26	STR.	2'-10"	-
WT2	#4	4	STR.	7'-1"	-
WT3	#4	22	STR.	4'-4 1/2" AVG.	5'-11" TO 2'-10"
WT4	#4	10	STR.	2'-8 1/2" AVG.	1'-11" TO 3'-4"
WV1	#5	4	STR.	6'-8"	-
WV2	#5	22	STR.	4'-4 1/2" AVG.	5'-11" TO 2'-10"

- ① Lap 2'-6" min. with Barrel Reinforcement.
- ② CS1 & CS2 Bars align with AL1 Bars in apron slab.
- ③ Extend F1, F3 & F5 Bars from Exterior Walls for a minimum lap of 2'-6" with WH1 & WH2 Bars.
- ④ Extend into Wing for a minimum of 2'-6".
- ⑤ 4 Sets of 5
- ⑥ 2 Sets of 5
- ⑦ 2 Sets of 11

SUMMARY OF QUANTITIES - EXIT STRUCTURE			
ITEM	UNIT	TOTAL	
CLASS AA CONCRETE	C.Y.	20.10	
REINFORCING STEEL	LB.	3,318.00	



NOTE:
For details of Barrel Reinforcement see Sheet No. 149

1-44 OVER CREEK BRIDGE "B"	COMANCHE COUNTY	DESIGN BRT 07/12
		DETAIL SJL 04/13
4 - 5'x4' REINFORCED CONCRETE BOX CULVERT DETAILS (SHEET 5 OF 5)		CHECK BRT 04/13
GARVER		
STATE OF OKLAHOMA	DEPARTMENT OF TRANSPORTATION	
JOB PIECE NO. 27050(04)	SHEET NO. 150	